

**EMMANUEL MISSION SR SEC SCHOOL, BEAWAR**  
**ONLINE CLASSES**  
**WEEK – 30 (12.10.2020)**  
**CLASS – VII**

\*\*\*\*\*

English: Kindly see below

Hindi: <https://youtu.be/OxLC8rAPXKE>

Mathematics: <https://youtu.be/EZrmsYyhVrg>

General Science: Kindly see below

Social Studies: <https://youtu.be/eaYhgI2lMYE>

Sanskrit: <https://youtu.be/F-AONV6UYdw>

Computer Science: <https://youtu.be/96z9qrx29y0>

General Knowledge: <https://youtu.be/cwg3oUM3wTQ>

Moral Science: <https://youtu.be/gbbNw6-u-2g>

Physical Education: <https://youtu.be/jJxi4F2NOhg>

Music (Guitar): [https://youtu.be/kRAto\\_PAdIE](https://youtu.be/kRAto_PAdIE)

Music (Keyboard): <https://youtu.be/qwHaLN4oTs0>

Health & Sanitation: <https://youtu.be/zSQtYLbCCChk>

Art Education: <https://youtu.be/XI9pWwNovJw>

\*\*\*\*\*

**EMMANUEL MISSION SR SEC SCHOOL, BEAWAR**  
**ENGLISH GRAMMAR**  
**CLASS- VII**  
**Chapter : 4 Pronoun**

---

**Answer the following questions:**

**1. What is a pronoun? Give examples.**

**Ans.** A pronoun is a word used in place of a noun.

Example: I, you, we, they, he, she, it, my, me, you, your, their, them etc.

**2. What are personal pronouns? Give examples.**

**Ans.** The words which refer a person, persons, a thing, things are called personal pronouns.

Examples: I, you, we, they, he, she, it etc. 3.

**3. How many forms and categories of personal pronouns are there?**

**Ans.** There are three forms of personal pronouns and they are divided into two categories. Observe the following table

Forms	Singular	Plural
First person	I, me, mine	we, us, ours
Second person	You, yours	you, yours
Third person	he, him, his, her, it	they, them, theirs

**4. What are reflexive pronouns? Give example**

**Ans** These pronouns are used when the doer ( subject) of an action and its receiver ( object) refer to the same person or thing. They are called reflexive pronouns for example--: myself, ourselves, yourself, yourselves, himself

**EMMANUEL MISSION SR SEC SCHOOL, BEAWAR**  
**SCIENCE**  
**CLASS – VII**

**Ch. : 11 - Transportation in animals and plants**

---

**A. Multiple Choice questions :**

1 . (C) , 2. (b), 3. (b), 4. (a), 5. (d)

**B. State True (T) or False (F)**

1 . (T) , 2. (T), 3. (F), 4. (T), 5. (F)

**C. Fill in the blanks with suitable words :**

1 . Atria , 2. Oxygen, 3 white Blood cells, 4. Septum, 5. Cooling

**D. Match the items**

1 . (C), 2.(e), 3.(b), 4.(a), 5.(d)

**E. Very short – answer type questions :**

**1 . Name the essential material which are necessary for all living beings for their survival**

**Ans. :** Food , water and oxygen are essential material for all living beings for their survival.

**2. Name the components of circulatory system.**

**Ans. :** The components of circulatory system are heart, blood and blood vessels.

**3 . What is the function of white blood cells in our body ?**

**Ans. :** White blood cells fight against the germs that enter in our body and protect us from the diseases.

**4. What is plasma ?**

**Ans. :** Plasma is the fluid components of blood in which all types of blood cells remain scattered.

**5 . Write the kinds of blood vessels found in human circulatory system.**

**Ans. :** The kinds of blood vessels found in human circulatory system are arteries, veins and capillaries.

**6. What is a septum ?**

**Ans. :** The left part of the heart is separated from the right part of the heart with the help of a septum.

**7. What is the function of a stethoscope ?**

**Ans. :** Stethoscope is a device to amplify the sound of heart.

**F. Short – answer type questions :**

**1 . What is the role of kidney in our body ?**

**Ans. :** Kidney is the main organ of excretory system. It filters the blood and remove waste products to from urine.

**2. Why does the lower surface of leaf lose more water ?**

**Ans. :** The lower surface of leaf lose more water because it contains more stomata

**3. How does absorption of water take place in plants ?**

**Ans. :** Root hair help to increase the absorption of water and minerals from the soil by increasing the surface area. This absorbed water along with the minerals is transported upward with the help of xylem tissue.

#### 4. Describe the function of heart.

**Ans. :** Pulmonary vein carries oxygen – rich blood from lungs to the left atrium. This blood is sent to left ventricle. From here it is pumped to the whole body through aorta ( an artery) . The blood from the arteries goes to the capillaries where the nutrients, oxygen and waste materials are exchange between capillaries and tissue cells. Vena cave ( a vein) bring carbon dioxide rich blood from the whole body to the right artium.

From the right atrium, blood goes to the right ventricle. And finally, carbon dioxide – rich blood pumped to the lungs through pulmonary artery. Heart always contains oxygen – rich blood in its left side and carbon dioxide rich – blood in its right side.

Heart pumps the blood into the body. To perform pumping action it contracts and released continuously.

#### G. Long – answer type questions :

##### 1 . What are the different components of blood ? Mention the function of each.

**Ans. : (1) Red blood cells :-** The different components of blood are heart, blood and blood vessels Important role of RBC is to transport of oxygen from lungs to cells and carbon dioxide from cells to lungs

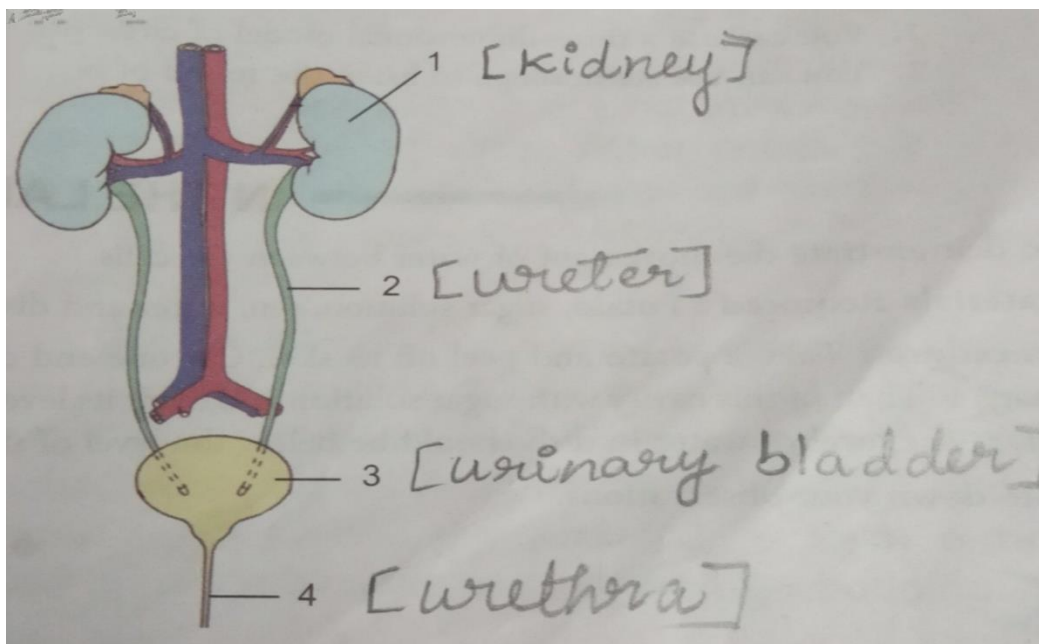
**(2) White blood cells :-** White blood cells fight against the germs that enter in our body and protect us from the disease.

**(3) Platelets :-** These are also a type of cells that help in clotting at the time of injury.

**(4) Plasma :-** Is the fluid components of blood in which all types of blood cells remain scattered.

##### 2. Draw a diagram of excretory system and label the following :

**Kidney, ureter, urinary ,bladder, urethra.**



#### 3. Write the importance of transpiration.

**Ans. : 1.** It provides cooling effect to plant.

**2.** It creates a suction pull so that water can pull upward in the tall trees ( it is just like a sucking of water through a straw).

#### 4. Describe the internal structure of human heart.

**Ans. :** The internal structure of human heart consists of four chambers. The upper two chambers are called atria and the lower two chambers are called ventricles. The left part of the heart is separated from the right part of the heart with the help of a septum.

